

Obsidian Instructions

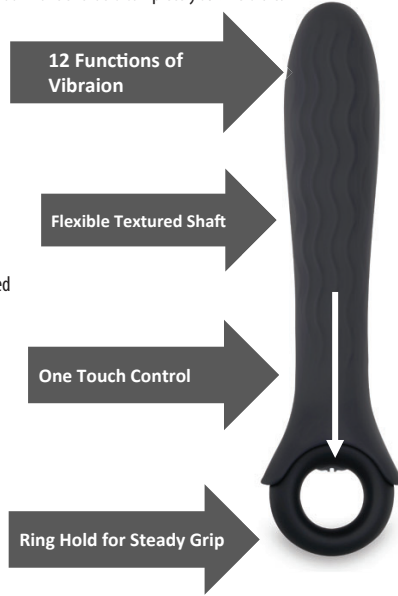
SKU 3525



For all you power lovers, comes Obsidian: a beautifully crafted love toy with robust rumbling and impressive ingenuity. The wavy, textured, and flexible shaft is made of the finest creamy silicone. Slip a finger through the loop handle for a steady grip - because you're going to need it! Amp up the extremely strong motor through 12 zippy speeds and functions that deliver the intensity you desire. Whether you're exploring your body's erogenous zones internally or externally this lightweight, easy to control vibrate will leave you breathless! Obsidian is a waterproof wonder that is completely submersible.

Features :

- 5 Year Warranty
- Waterproof and submersible
- Phthalate and latex free
- Silicone
- Not for use with silicone lubricants
- Total length: 8.5"
- Insertable length: 6.5"
- Width at widest point: 2.09"
- Rechargeable - USB charge cord included
- Complete charge: 1 hour
- Run time high speed: 40 minutes
- Run time low speed: 75 minutes



Operating



One-touch Control: Press and hold the power button located inside the grip ring 3 seconds. The first function activates. The button will glow when On.

Tap the On/Off power button to initiate the 11 additional functions. Each press will cycle to the next vibration level of intensity.

Press and hold the power button for 3 seconds to turn Off.

Cleaning and storage:

Clean before and after use. Dry completely. For best results we recommend using Athena's (antibacterial) Mighty Tidy Toy Cleaner (SKU MTT-1235 4 oz. or SKU MTT-2762 8 oz.)

Lubrication:

Be sure to use ample lubrication with your bedroom toys. For great results try Athena's Perfectly Pure Intimate Moisturizer (SKU 5701). You can find additional lubrication options on our web site or in our catalog.

Follow these simple steps to help extend the life cycle of your items:

Do not store products near extreme cold or heat.

Do not store your adult toys in a manner where they are touching. Keep them separated to avoid melting or discoloring.

Do not place lotion bottles or adult novelties directly on furniture surfaces. Place them on a cloth to protect your toys and the finish on your furniture.

Store in a cool dry location.

Caution :

For adult use as a non-medical pleasure device only. Discontinue use in the event of any medical condition or pain.

Warranty:

All sales are final due to the intimate nature of our products. No cash refunds will be given. Effective February 1, 2021, this motorized product is guaranteed for 5 years for a replacement of the exact item. If you purchased this item at a party and need a replacement, please contact your Goddess or Adonis directly. If you purchased this product on the Athena's website and need a replacement, call (877)-ATHENAS or email our Customer Care Liaison at customerservice@athenashn.com for instructions to send back your item.

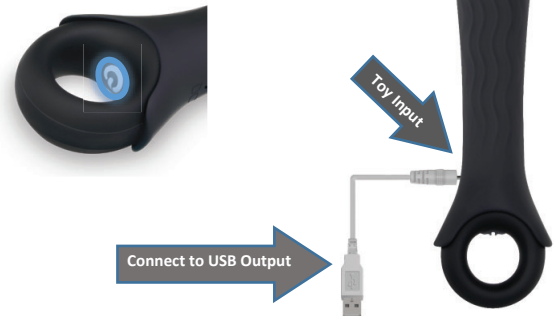
All defective product returns must be accompanied by a pre-authorization number. If product arrives broken or breaks within 30 days, it's the client's responsibility to pay for the shipping of the broken item to Athena's, Athena's is responsible for the shipping of the replacement. If this item breaks after 30 days of receipt, it's the client's responsibility to pay for the shipping of the broken item to Athena's and the shipping for the replacement item.



©April 2022
Athena's Home Novelties, Inc.
Woonsocket RI 02895
www.athenashn.com
1-877-ATHENAS

Charging

Indicator Light will flash when charging and glow solid when complete.



This vibrator arrives with a partial charge. Fully charge before first use. Connect the USB cable to the USB port of your computer or other power source and insert the plug of the charge cord into the toy.

The light on the control panel will flash when charging and remain solid when fully charged. Full charge takes about 1 hour. There is no danger of over-charging, but we recommend not to charge for long periods of time. Battery life depends on frequency and speed of use. We recommend fully charging your product once every 6 months. Only use the cord supplied with this product or an Athena's authorized replacement cord.

Rechargeable - USB charge cord included

Complete charge: 1 hour

Run time high speed: 40 minutes

Run time low speed: 75 minutes