

# Happy Ever After Operating Instructions



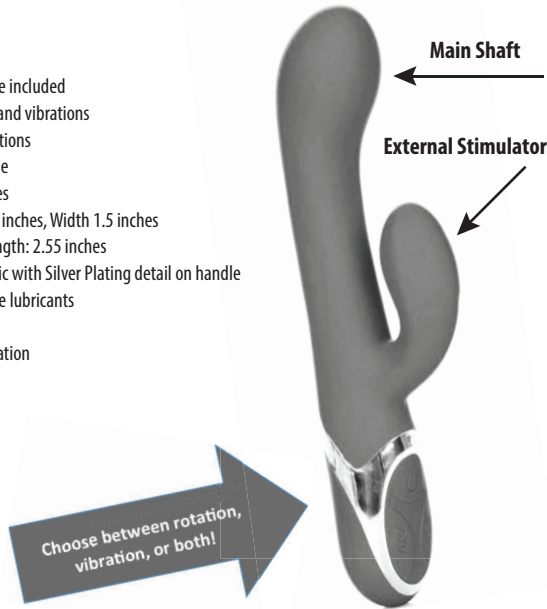
ATHENA'S  
HOME NOVELTIES

SKU 3397

Once upon a time, a twisting, turning vibrator came along that made the people of the kingdom rejoice! The silky, curved, silicone shaft with its generously bulbous head spun round and round, stroking G-Spots and P-Spots across the land! The rotating beads sent the people into throws of ecstasy with a delightful internal massage! The round, external stimulator felt heavenly on the clitoris or perineum. People cried out as they experienced orgasms in and out of water and they lived *Happily Ever After!* The End!

## Features :

- Rechargeable USB cable included
- 12 powerful functions and vibrations
- 4 varying rotating functions
- Latex and Phthalate free
- Total length: 9.25 inches
- Insertable length: 5.25 inches, Width 1.5 inches
- External Stimulator Length: 2.55 inches
- Silicone with ABS plastic with Silver Plating detail on handle
- Not for use with silicone lubricants
- Waterproof
- Provides G-spot stimulation

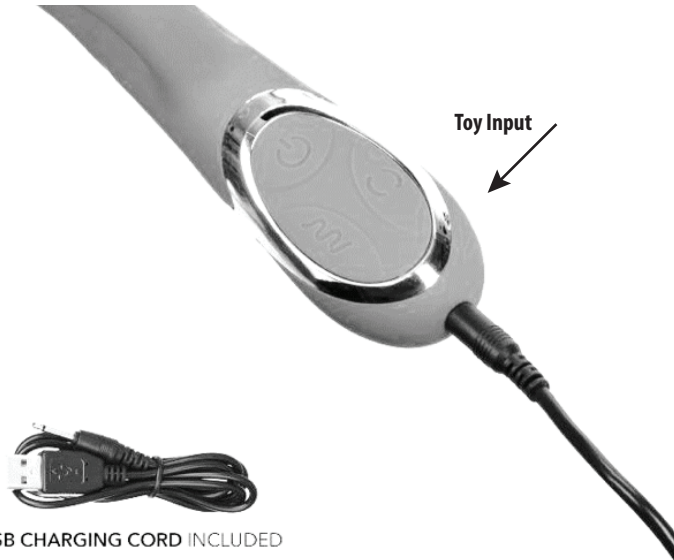


## Charging

Charge upon opening. Connect the USB cable to the USB port of your computer or other power source and the other end to the toys input.

The LED light will blink when charging and become solid when fully charged. Initial charge takes about 135 minutes. There is no danger of over-charging.

Battery life depends on frequency and speed of use. It's recommended to fully charge your product once every 6 months.



USB CHARGING CORD INCLUDED

## Cleaning and storage

Clean, before and after every use. Dry completely. For best results, we recommend using Athena's (antibacterial) Mighty Tidy Toy Cleaner (SKU MTT-1235 4 oz. or SKU MTT-2762 8 oz.) Store in a cool dry location.

## Lubrication

Be sure to use ample lubrication with your bedroom toys. For great results try Athena's Perfectly Pure Intimate Moisturizer (SKU 5701). You can find additional lubrication options on our web site or in our catalog.

## Follow these simple steps to help extend the life cycle of your items

Do not store products near extreme cold or heat.

Do not store your adult toys in a manner where they are touching. Keep them separated to avoid melting or discoloring.

Do not place lotion bottles or adult novelties directly on furniture surfaces.

Place toys on a cloth to protect your toys and the finish on your furniture.

**Caution:** For adult use only as a non-medical pleasure device only. Discontinue use in the event of any medical condition or pain.

## Warranty

All sales are final due to the intimate nature of our products. No cash refunds will be given.

Effective February 1, 2021, this motorized product is guaranteed for 1 year for a replacement of the exact item. If you purchased this item at a party and need a replacement, please contact your Goddess or Adonis directly. If you purchased this product on the Athena's website and need a replacement, call (877)-ATHENAS or email our Customer Care Liaison at [customerservice@athenashn.com](mailto:customerservice@athenashn.com) for instructions to send back your item. All defective product returns must be accompanied by a pre-authorization number.

If product arrives broken or breaks within 30 days, it's the client's responsibility to pay for the shipping of the broken item to Athena's, Athena's is responsible for the shipping of the replacement. If this item breaks after 30 days of receipt, it's the client's responsibility to pay for the shipping of the broken item to Athena's and the shipping for the replacement item.



ATHENA'S  
HOME NOVELTIES

© June 2021

Athena's Home Novelties, Inc.  
Woonsocket RI 02895

[www.athenashn.com](http://www.athenashn.com)  
1-877-ATHENAS

## Control Panel

**Operating:** To turn on or turn off press the power button. A light will indicate that the toy is on and in standby mode.

Press the Vibration Settings Button to turn on and cycle through the 12 vibration functions. To turn off vibrations only and return to standby, press and hold down the Vibration Settings Button. Press the Rotating Settings Button to turn on and cycle through 4 rotating functions. To turn off rotations only and return to standby, press and hold down the Rotation Settings Button.

To turn off instantly, press the power button. Memory chip resumes on last function used. Runs for 65 minutes on high speed, and 80 minutes on low speed.

